

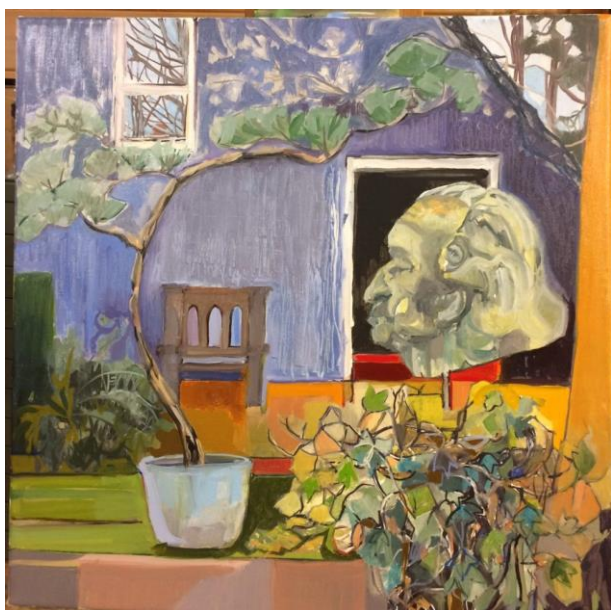
# SUMMER OUTING

## Wednesday 10th July 2024

Haslemere  
Gardening  
Society

Visit to **RHS Hyde Hall, Essex, CM3 8ET and the Gibberd Garden Harlow CM17 ONA** on Wednesday 10th July 2024

Discover summer at **Hyde Hall**, a time when the Dry Garden, Rose Garden and Cottage Garden are bursting with flower colour. Nestled in the heart of rural Essex, enjoy the peace and tranquillity of Hyde Hall, with its eclectic mix of traditional and modern styles. Set in a landscape of rolling hills and with beatific panoramic views, Hyde Hall is an oasis of peace and tranquillity. Highlights include the Dry Garden with its fantastic range of drought resistant plants and the Hilltop Garden with its roses and herbaceous borders. Since its inception in the mid-1950s, this vast garden has established from a handful of trees atop a windy hill to a jewel in the landscape that embraces superb ornamental horticulture, wild woodlands, majestic meadows and stylish gardens that embrace new ways of thinking about our world and our future. From global produce to dry climates, courtyard gardens and arboreta, Hyde Hall delivers something for everyone



The Gibberd Garden is an inspirational and fascinating Grade II listed garden. Created between 1957 and 1984 by Sir Frederick Gibberd, Master Planner of Harlow New Town and leading post-war architect, it is acknowledged to be one of the most important 20<sup>th</sup> century gardens in the country. The garden occupies 9 acres of a 14 acre site on the side of a small valley, sloping down to the Pincey Brook. It is full of sculptures and what Sir Frederick called 'decorative objects', including ceramic pots and items of architectural salvage. It has lawns, pools, streams and glades, a dramatic mature lime avenue, a brookside walk, a wild garden, an arboretum and a moated castle with a drawbridge.

In making his garden Sir Frederick fulfilled his ambition to create a work of art. It is loved and admired by garden designers, professional gardeners and the many visitors who are captivated by its unique atmosphere.

# SUMMER OUTING

## Wednesday 10th July 2024

The logo for the Haslemere Gardening Society, featuring the text "Haslemere Gardening Society" in a serif font, with "Haslemere" on the first line, "Gardening" on the second, and "Society" on the third, all in white against a dark green rectangular background.

### Timetable & Costs

The luxury coach departs Liphook Millennium Hall at 7.45am, St Christopher's Green 8.00am and Haslemere Hall at 8.15 am. Arriving first at Hyde Hall where we will have lunch. We will have plenty of time to look round this beautiful garden before we leave for the Gibberd Garden. The price per person is **£34.00**.

*Emergency Mobile Number 07833 924921*

## To book this trip

Please email [david.haslemeregardeningsociety@gmail.com](mailto:david.haslemeregardeningsociety@gmail.com)  
or telephone **07833924921**

Please include the following information:

- Your name
- Number of tickets required
- Amount paid
- Where you intend to board the coach
- Method of payment (BACS, Cheque)

The price per person is **£34.00**

### Method of Payment

(1) **BACS** - Direct from your bank. The details to quote when you set up the BACS payment are:  
Name: Haslemere Gardening Society                      - Sort code: 30-93-94                      - Account number:  
00296837

Please also include a reference on the BACS payment in the form of "JULY"-followed by your name.

(2) **Cheque** - If you prefer to pay by cheque, please make it payable to "Haslemere Gardening Society" and post it to Georgina Trout, 7, Woodlands Lane, Haslemere. GU27 1JU.

[www.haslemere-gardening-society.co.uk](http://www.haslemere-gardening-society.co.uk)